

Kalmar RT240 Rough Terrain Container Handler



Kalmar RT Center LLC's Rough Terrain Container Handler(RTCH)

Kalmar RT's RTCH has 53,000 lbs (24,040 kg) capacity with the ability to stack 20 and 40 foot ISO containers three high and two rows deep.



Purpose built for rough terrain, fording through 60 inches (1.52 meters) of water, extreme operating temperatures and unsurpassed reliability and durability. (Standard paint color shown to the left)

Unmatched transportability and versatility
(Optional commercial paint shown to the right)



Moving Logistics into Rough Terrain

The Kalmar RT240 operates in unimproved, rough terrain surfaces while easily handling twenty or forty foot containers in the harshest conditions.



KRTC is a customer focused organization dedicated to the highest level of integrity and innovation, delivering quality products through excellence and teamwork. Our vision is to be the world leader in material handling solution and related services for the government sector.

The use of containers for the delivery of a wide variety of supplies is rapidly expanding within most military operations throughout

the world. Military and humanitarian operations in remote locations mean logistics must be supported in areas where infrastructure has been destroyed or is non-existent. Military Forces have turned to containerization as a solution to this challenge.

The Kalmar RTCH have the ability to travel over unimproved, rough terrain surfaces while easily handling twenty or forty foot containers in even the harshest of condi-

tions. It is easily transportable and does not require any special tools.

Kalmar RT Center (KRTC) provides material handling solutions for our primary customer, the U.S. Department of Defense, its allies, and related government agencies worldwide.

Material Handling Versatility



Capabilities

- Stack or unstack twenty and forty foot ISO containers with a gross weight of 53,000 lb (24,040 kg) stacked three high, in the first row.
- Stack or unstack twenty and forty foot ISO containers, with a gross weight of 27,500 lb (12,474 kg), stacked three high, in the second row.
- Stack or unstack twenty foot ISO containers with a gross weight of 53,000 lb (24,040 kg), stacked two high, in the longitudinal position.

Kalmar RT Center's equipment has stood the test of time and battle. We understand military operations are conducted in rough, unforgiving environments. We design and build our equipment with that in mind.

Features

The Kalmar RT240 is equipped with an electro-hydraulically operated twenty to forty foot top handler that is capable of:

- Side shifting
- Rotation/Slewing
- Forward/rear tilting
- Left/right tilting
- Load position leveling and locking

These features allow containers to be handled in a wide range of approach angles and ground conditions.



Patented Folding Boom Design



The Kalmar RT240 has a patented folding boom design that allows conversion from operational mode to transport mode in less than thirty minutes without disassembly, special tools, or lifting assets. This conversion brings the RTC240 from an overall height of four meters (13.12 ft) to just under three meters (9.84 ft) allowing the machine to be transported by ship, rail, or over the road by truck.

The RT240 can self-deploy an additional third axle reducing its weight footprint. This coupled with mountable wheels for the top handler, allows the machine to be loaded on transport aircraft such as the C-5, C-17, and the ANTONOV 124.



Proven Reliability in Any Condition Around the World

Anywhere, anytime, in any condition



The Kalmar RT240 operates with ease in adverse terrain and weather conditions from the extreme heat of the Southwest Asian deserts to the frigid cold of the Arctic regions. The machine is capable of fording 1.52 meters (5 ft) of water allowing it to operate where other container handlers and reach stackers cannot. By utilizing the different steering modes, the RTCH can operate in tight areas such as military and commercial landing ships or large areas like a shipping container yard. It is an essential tool for logistics in rough terrain.

The RTCH has been utilized to deliver food, water, and medical supplies to natural disaster victims. Missions have included Hurricane Katrina and Operation Unified Response for the earthquake in Haiti. Its ability to traverse the unfavorable conditions remaining after the natural disaster was an essential asset to the success of the relief efforts. The Kalmar RTCH can go anywhere, anytime, in any condition.

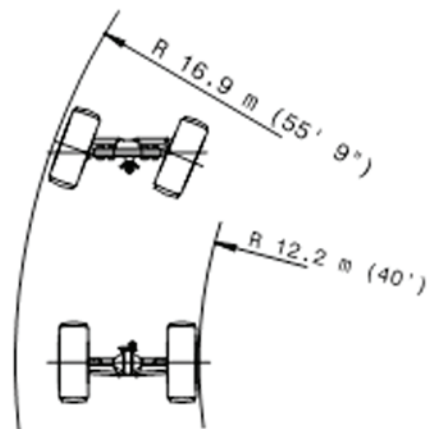
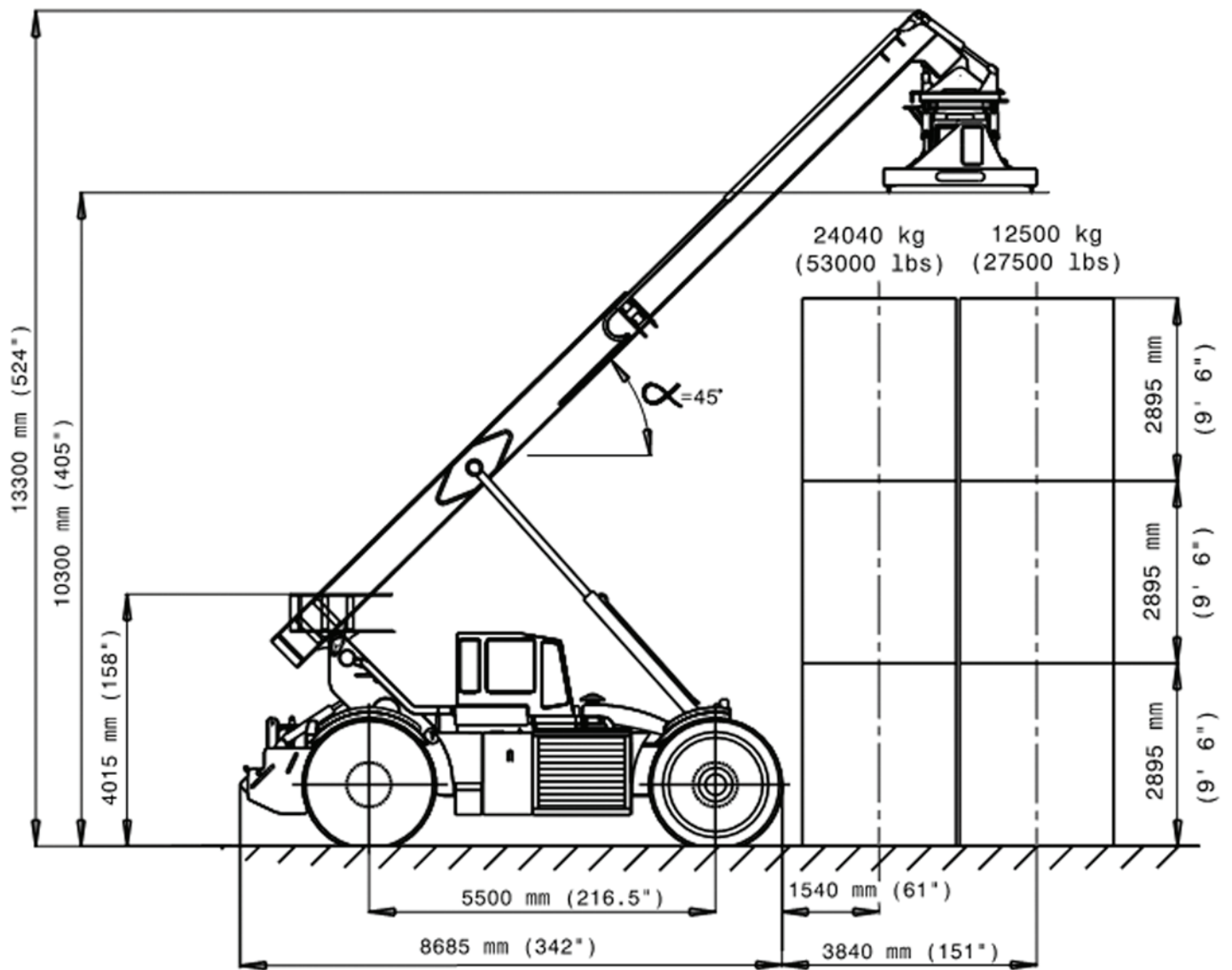
Forklift Attachment



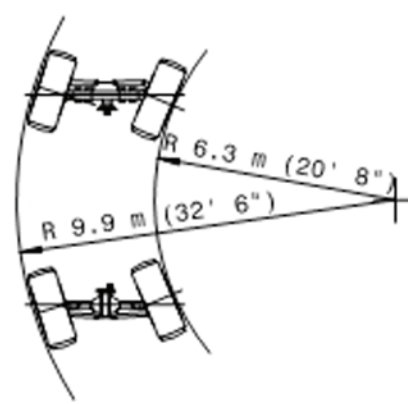
The forklift attachment is connected to the top handler twist locks and two hydraulic hose quick-disconnects. Forklift operation is controlled from the joystick, and includes adjustable fork tines. The fork tines are adjustable from 24in. (61 cm) center-to-center to 81.5 in. (207 cm) center-to-center. Lift capacity is 44,000 lb (19,958 kg). This gives the operator the flexibility to lift or load a wide variety of cargo, including standard and odd size containers as well as material loaded on a pallet.

The forklift kit attaches directly to the twist locks on the top handler in less than fifteen minutes without special tools or other lift assets. The fork tines and vertical support beams fold under the forklift framework for transport.

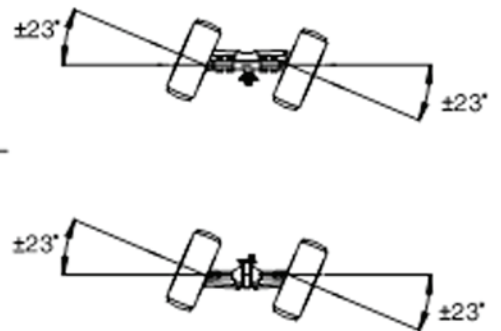




2 Wheel Steer



4 Wheel Steer



Crab Steer

Engine

Make Cummins
 Model QSM11, US EPA Tier III
 Cylinder 6
 Power 298 kW, 400 HP
 Displacement 10.8 L/269 cu.in
 Cooling Hydraulic driven, variable speed fan
 Fuel Diesel/JP-8/JP-5

Transmission

Make ZF
 Model 4 WG310
 Gears 3 fwd/2 rev

Axles

Make Kessler
 Model, Front..... LT102PL341/528NLB4650
 Model, Rear LT102PL341/528NLB4660

Brakes

Service.....Hydraulically operated & cooled,
 in-board, wet disk type.
 ParkingHand operated, spring
 applied/hydraulically released

Performance

Travel speed, unladen 37 km/h, 23 mph
 Travel speed, laden 24 km/h, 15 mph
 Travel speed, reverse, max 11.3 km/h, 7 mph
 Gradeability at 3 km/h, 2 mph
 Unladen 27%
 Laden 27%
 Fording depth..... 1.52 m, 60 in

Weight

Curb weight 53751 kg, 118500 lbs
 Front axle 29121 kg, 64200 lbs
 Rear axle 24630 kg, 54300 lbs

Service Capacities

Fuel tank 390 L, 103 gal
 Hydraulic tank 681 L, 180 gal

Additional Data

Electrical system 24V DC
 Alternator 105 Amps

Tires

Size 29.5 - 35

RT240 in Transport Mode